



# LGBTQ Inclusive Practice Webinar

**Provide more inclusive service for your LGBTQ clients by taking the Lesbian, Gay, Bisexual, Transgender and Queer Inclusive Practice Training.**

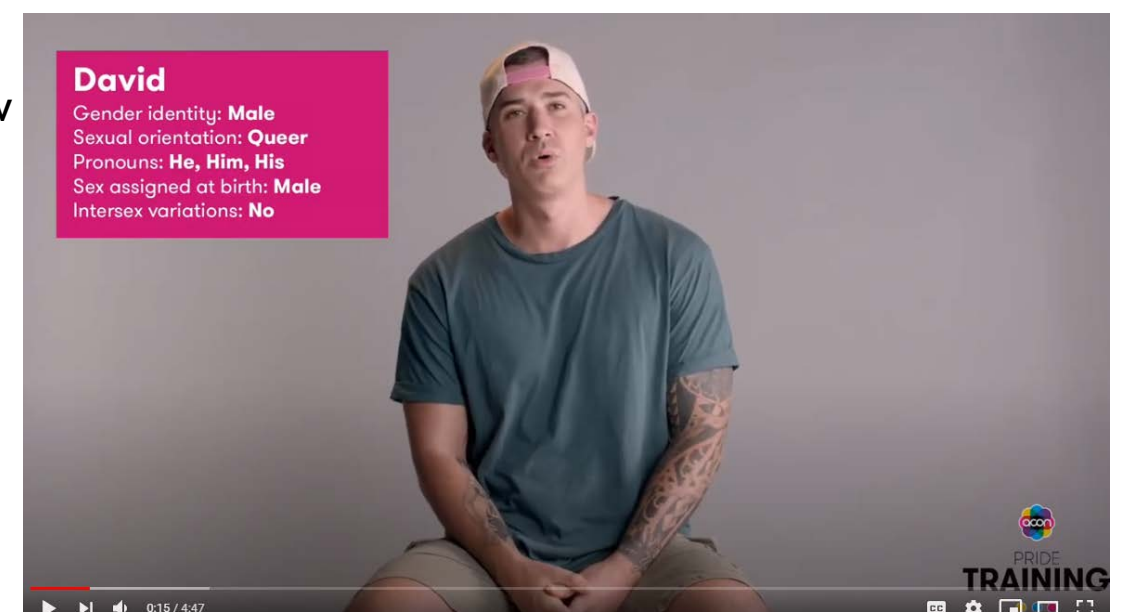
**Provided by your local LGBTQ+ Inclusion Network, Rainbow Connection Network in Penrith**

To remain competitive in the marketplace and provide exemplary service to clients, many organisations today are reassessing their training and operations to align with changing attitudes, policies and legislation regarding the LGBTQ communities. Facilitated by a qualified ACON trainer, this webinar will help you advance your understanding of LGBTQ culture and unique health aspects with a focus on inclusive practices for health and wellbeing professionals through discussion with like-minded people, compelling video content from the community, and learning activities.

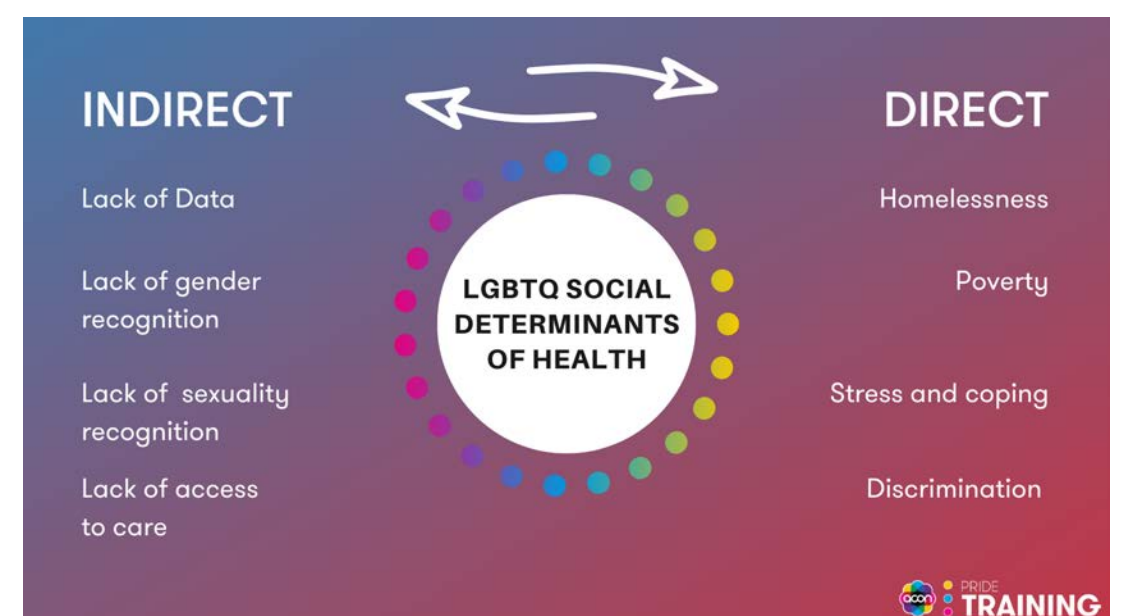
## This full-day webinar will help you to:

- Differentiate between gender and sexuality
- Summarise unique health and wellbeing disparities faced by sexuality and gender diverse people
- Review important events from queer history and the current legislation related to these priority populations.
- Detect areas for improvement within their role and workplace
- Develop strategies and implement actions to increase access and satisfaction of service for people with diverse sexuality and gender

Recorded interviews allow you to listen to community members' experiences first-hand.



Engaging presentations designed to introduce you to important concepts.



**PROVIDED FOR AND IN PARTNERSHIP WITH RAINBOW**

**CONNECTION NETWORK IN PENRITH**

**TUESDAY, 20 JULY 2021 FROM 9:30AM-4:30PM**

**REGISTER HERE FOR THIS FREE WEBINAR**